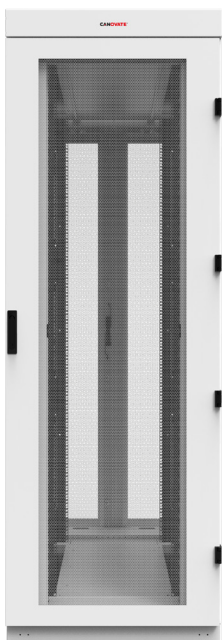
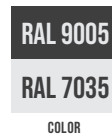


# INORAX-STAR RACK CABINET

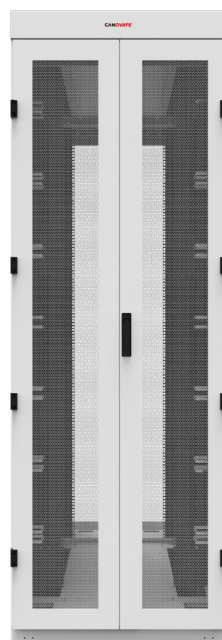
Canovate's seismic rack cabinets are designed and manufactured according to structural performance criteria set by GR63 Telcordia Zone 4 for installation in Earthquake Risk Zone 4 areas. Use of a floor anchor kit with the seismic cabinet is highly recommended.

## Highlights

- 2200 kg carrying capacity,
- Perforated front and rear doors,
- Solid Side Panels,
- Internal top sheet,
- 2 pairs of depth adjustable 19" Mounting Rails,
- Front and rear perforated doors with lever lock mechanism and multi-point espagnolette lock,
- UL Certified, RoHS and TS EN 61587-1 compliant,
- It has TS EN 60068-2-47 environmental conditions durability certificate.
- Paint ; Compliant with ISO 9227 and ASTM B 117-85 standards, resistant to minimum 500 hours salt test and high strength against impacts; Electrostatic RAL 9005 Texture Black or RAL 7035 Texture light Gray powder paint is used. Nano Technology (Zirconium coated surface treatment) is used in the coating before painting.



Front View



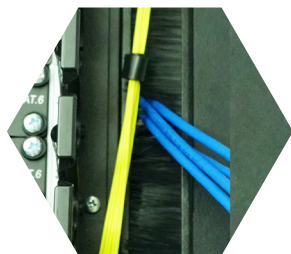
Rear View



3/4 Front View



3/4 Rear View

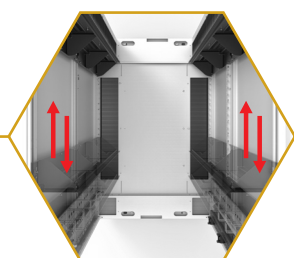


Vertical blanking panel with brushed cable entry slot

Cable entry points with brush on top and bottom covers



Vertical cable organizer for high cable density



2 pair adjustable vertical mounting rail with U-marked



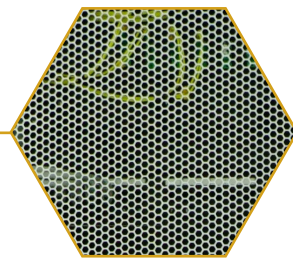
Cable hook for vertical cable tray at the rear side of cabinet



Multi-bending on the chassis with 13 folds for high durability and rigidity



High perforation ratio at the doors for efficient air flow



Plinth or caster/feet options for long-term usage





## Technical Features

<b>Material</b>	Sheet Steel
<b>Frame</b>	1,5mm Sheet Steel Front and rear welded chassis with 14 bends structure.
<b>Height</b>	42U, 45U, 47U
<b>Width</b>	600 or 800 mm
<b>Depth</b>	1000, 1200 mm
<b>Vertical Extrusions</b>	" 2,0mm Sheet Steel , 19" sliding Two mounting posts front and two rear with welded 4 bends structure. Marking and number of every U position Marking and number of horizontal bars for depth off-set. Options: 21, or 23" for W:800mm"
<b>Load Rating</b>	Static 2200 kg balanced load, Dynamic balanced load 1000kg
<b>Front Door</b>	"1,0mm Sheet Steel Single Flat doors %80 perforation rate handle lock DIN profile, universal key 333, multipoint; optional combination lock or electronic locks Door opening angle 180° 4 point hinged Options: double doors, single curved door and glass door"
<b>Rear Door</b>	"1,0mm Sheet Steel Double doors %80 perforation rate Handle lock DIN profile, universal key 333, multipoint; optional combination lock or electronic locks, Door opening angle 180° 4 point hinged Options: Single doors, single curved door and glass door"
<b>Top Plate</b>	"Configurable top plate 3 pcs.cable trays is suitable for top of rack (each tray is width 200mm) High density cable entries 2 pcs : W:120x L:680mm, 2pcs W:115 x L 115mm for depth 1200mm Racks covered by brushes High density cable entries 2 pcs : W:120x L:480mm, 2pcs W:115 x L 115mm for depth 1000mm Racks covered by brushes "
<b>Bottom Plate</b>	"Configurable bottom plate High density cable entries 2 pcs : W:120x L:680mm, 2pcs W:115 x L 115mm for depth 1200mm Racks covered by brushes High density cable entries 2 pcs : W:120x L:480mm, 2pcs W:115 x L 115mm for depth 1000mm Racks covered by brushes "
<b>Side Panels:</b>	"Horizontally divided side panels Removable with locks Hanging simple installation Options: Universal key 333, locks"
<b>Feet</b>	Adjustable feet M12, plinth
<b>IP Rating</b>	IP20
<b>Color Design</b>	Powder-coated RAL 7035 or RAL 9005, other color options available
<b>Air-Conditioning</b>	Compatible for INROW systems
<b>Compliance Standards</b>	"Reach, RoHS, EIA-310, UL 2416,CSA, 60950-1, TSE EN- 61587-1, GR63 CORE, EN/IEC 60068-3-3, TS EN 60068-2-6, TS EN 60068-2-57, TS EN 60255-21-1, TS EN 60255-21-2"
<b>Flame Rating</b>	UL 94, V0
<b>STANDART CONFIGURATION</b>	
<b>CSB-DC- X</b>	Rack frame
	Top Plate none brushes
	Bottom Plate none brushes
	Front perofoted door 80% with multipoint handle lock
	Double rear doors 80% with multipoint handle lock
	2 pairs 19" sliding extrusions
	3 pairs horizontal extrusion holders
	2 pairs of horizontally divided side panels
	GND/earthing kit
	Heigt: 60mm Plint
	Adjustable feet
<b>ACCESSORIES</b>	
<b>code</b>	Cables holder set left and right side 3 pairs
<b>code</b>	Top Brush Set
<b>code</b>	Bottom Brush Set
<b>code</b>	Wheelset
<b>code</b>	1pair Vertical Cable Managment Plastic FingerType For W:800mm
<b>code</b>	1pair Vertical Cable Managment Plastic FingerType W:600mm
<b>code</b>	19" Earthing Bar
<b>code</b>	Cable Tray for Top of Rack W: 200mm H:60mm For W:800mm
<b>code</b>	Cable Tray for Top of Rack W: 200mm H:60mm For W:600mm
<b>code</b>	Shelf for Depth:1000mm
<b>code</b>	Shelf for Depth:1200mm
<b>code</b>	Top of Rack Crown H:100mm