



# MP2000 Series Router Datasheet

---

*Maipu Communication Technology Co., Ltd*  
No. 16, Jiuxing Avenue  
Hi-tech Park  
Chengdu, Sichuan Province  
People's Republic of China - 610041  
**Tel:** (86) 28-85148850, 85148041  
**Fax:** (86) 28-85148948, 85148139  
**URL:** [http:// www.maipu.com](http://www.maipu.com)  
**Email:** [overseas@maipu.com](mailto:overseas@maipu.com)

All rights reserved. Printed in the People's Republic of China.

No part of this document may be reproduced, transmitted, transcribed, stored in a retrieval system, or translated into any language or computer language, in any form or by any means, electronic, mechanical, magnetic, optical, chemical, manual or otherwise without the prior written consent of Maipu Communication Technology Co., Ltd.

Maipu makes no representations or warranties with respect to this document contents and specifically disclaims any implied warranties of merchantability or fitness for any specific purpose. Further, Maipu reserves the right to revise this document and to make changes from time to time in its content without being obligated to notify any person of such revisions or changes.

Maipu values and appreciates comments you may have concerning our products or this document. Please address comments to:

*Maipu Communication Technology Co., Ltd*  
No. 16, Jiuxing Avenue  
Hi-tech Park  
Chengdu, Sichuan Province  
People's Republic of China - 610041  
**Tel:** (86) 28-85148850, 85148041  
**Fax:** (86) 28-85148948, 85148139  
**URL:** [http:// www.maipu.com](http://www.maipu.com)  
**Email:** [overseas@maipu.com](mailto:overseas@maipu.com)

All other products or services mentioned herein may be registered trademarks, trademarks, or service marks of their respective manufacturers, companies, or organizations.

---

# Contents

---

<b>MP2000 Series Multiservice Router</b> .....	<b>4</b>
<b>Key Features</b> .....	<b>5</b>
<b>Technical Specifications</b> .....	<b>6</b>
<b>Order Information</b> .....	<b>7</b>
<b>Typical Applications</b> .....	<b>8</b>
Networking for Data Encryption of Branches .....	8
MPLS VPN Solution .....	9

# MP2000 Series Multiservice Router

---

MP2000-104A/B is a new generation multiservice router for small branch offices.

It integrates routing, security, switching and VoIP features. It adopts fixed design and supports one Ethernet WAN port, four Ethernet LAN ports and provides access to four-port FXS and one-port FXO.

It provides All-In-One access of small offices and home offices. It simplifies the network structure and reducing investment on devices and maintenance.



MP2000-104A

# Key Features

---

- **Strong routing and security function**  
MP2000 supports routing and switching, IP Sec VPN, voice data VLAN tag. It provides the Ethernet interface with wire speed switching function, which can be configured as wan interface. It supports PPPOE, DHCP Server, Client and NAT.
- **Various VoIP application function**  
It supports call id, call identification, call forwarding, call transfer, call wait, hot line dialup, PSTN network transparent auto switch, dialup delay, standard T.38 protocol, call routing, call limitation, Multi-number for one phone, Multi-phone with one number, IVR record.
- **Advanced security guarantee**  
It supports TACACS and RADIUS to prevent non-authorized user accessing to system, the packet filtering, firewall configuration check and head off the attack of icmp flood, smurf, fraggle, port scan. It supports extended ACL and VLAN to control access and flow, and Web configuration management

# Technical Specifications

Item	MP2000-104A-AC	MP2000-104B-AC
<b>Product configuration</b>		
10/100M Ethernet interface	1FE (WAN) + 4FE (LAN)	1FE (WAN) + 4FE (LAN)
Voice interface	4FXS + 1FXO	4FXS + 1FXO
IPsec	Inbuilt	Inbuilt
<b>Performance parameters</b>		
Processor	High-speed RISC processor	High-speed RISC processor
Flash	8Mbytes	32Mbytes
Memory	32Mbytes	64Mbytes
<b>Standard and protocol</b>		
Link protocol	IEEE 802.2 (LLC) , IEEE 802.3 (Ethernet) , 802.1Q	
Network protocol	TCP/IP, ICMP, UDP, FTP, TFTP, SNMP, TELNET, RLOGIN, DHCP, HTTP, DNS, ARP, PPPOE	
Routing protocol	Static routing	Static routing, RIPv1/v2, OSPF, BGPv4
Network security	IPsec, IKE, PKI, CA, AAA	
QoS	FIFO, PQ, CO, FQ, WFQ, CBWFQ, LLQ, RSVP, CAR, SPD, WRED, Traffic Shaping	
IP PHONE	DTMF, VAD/CNG, G.168–2000, RTP ITU-T H.323, H.225.0 (RAS and Q.931) , H.245, H.450.x, T38, SIP G.711a, G.711u, G.723r63, G.729, G.729a, G.729wb	
Management protocol	SNMP	
<b>Physical index</b>		
Dimension (W×D×H)	245mm × 200mm × 65mm	
Weight	0.6kg	
<b>Power supply requirement</b>		
Input voltage (AC)	100~240V, 50~60Hz	
Power consumption	=<14W	
<b>Environment parameters</b>		
Operating temperature	0~40℃	
Operating humidity	10~90%, non-condensing	

# Order Information

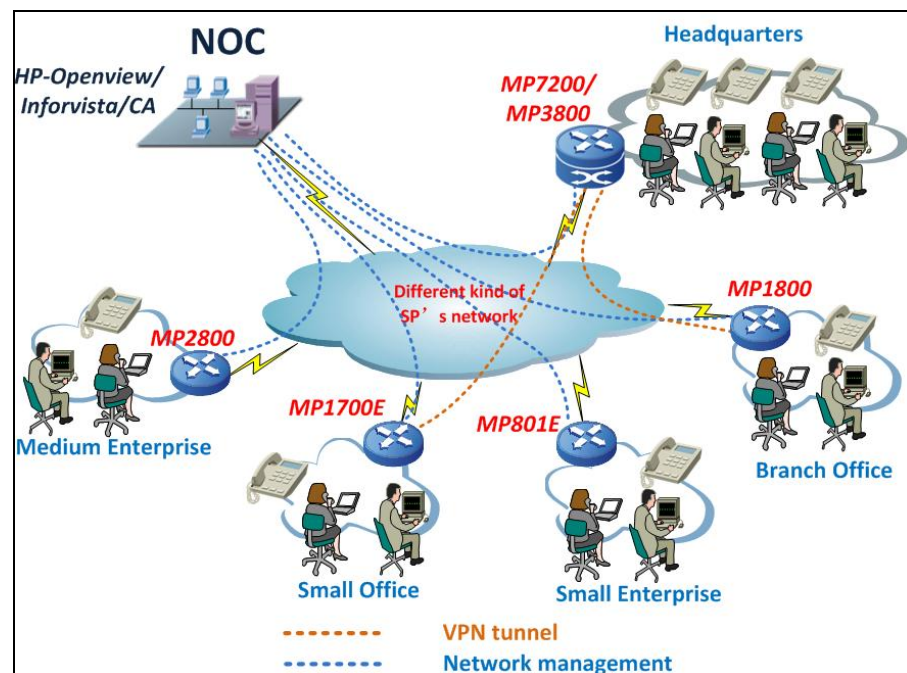
---

Product model	Description
MP2000-104A-AC	One 10/100M WAN Ethernet port, four 10M/100M LAN Ethernet ports, four FXS ports, one FXO port, 8M FLASH , 32M memory, AC power supply(support only static routing protocol)
MP2000-104B-AC	One 10/100M WAN Ethernet port, four 10M/100M LAN Ethernet ports, four FXS ports, one FXO port, 32M FLASH , 64M memory, AC power supply(support static and dynamic routing protocol)

# Typical Applications

## Networking for Data Encryption of Branches

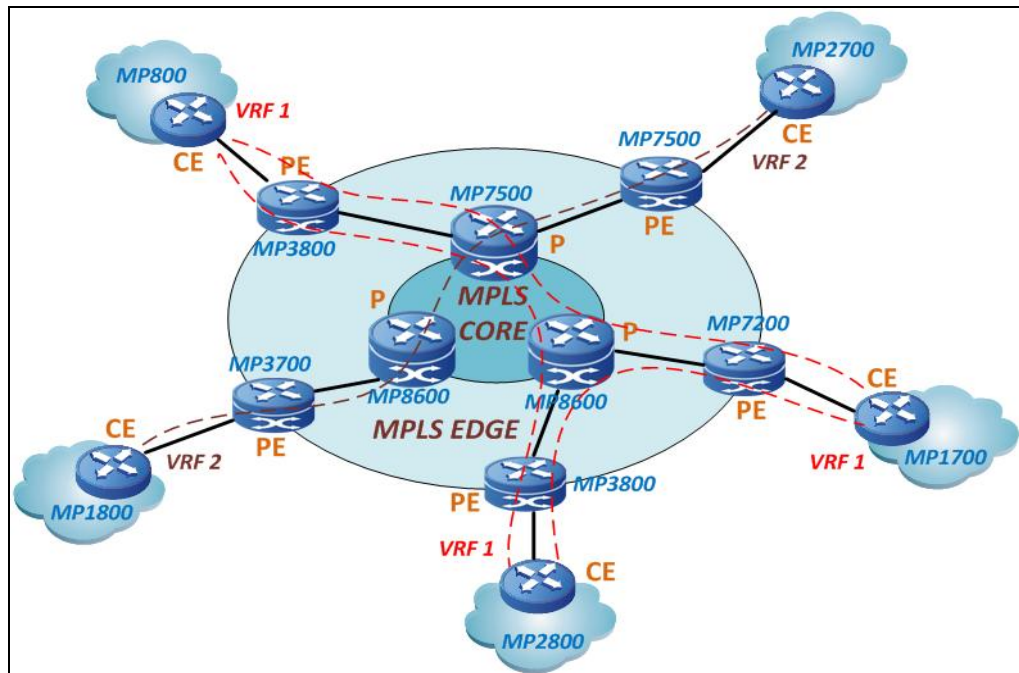
With the business expanding of the group company, the branches and small offices need to exchange information with the headquarters. The medium/low-end routers of Maipu serve as the access devices of the medium/small branches and can set up the security tunnel with the core router in the headquarters via the public network, ensuring the security and reliability of the company information and saving the costs of leased lines.



The headquarters adopts the medium/high-end routers of Maipu. With the high performance and high security of the router, and the VLAN isolation and 802.1X authentication technologies, the security access authentication for the intranet users can be realized.

The branches adopt the medium/low-end routers of Maipu as the access platform of VPN and IPSec.

# MPLS VPN Solution



MAIPU routers support MPLS VPN and can be used as CE and PE equipment. MAIPU CE routers include MP800, MP1700, MP1800, MP2700, MP2800, MP3700, MP3800 and MP7200. MAIPU PE routers include MP2800, MP3700, MP3800, MP7200 and MP7500.

In MPLS VPN network, PE runs MPLS and PE router connects to VPN network via VRF. The CE equipments related to the same VPN tunnel can access each other.

MAIPU routers offer various WAN interfaces including E1, CE1, V.35, ISDN, PSTN and Ethernet. The operator can provide primary and secondary lines for enterprise customers simultaneously to enhance MPLS business quality.

Besides, by using MAIPU MPLS access solution, the operator can provide VoIP services without increasing any cost.